



# NETBRIGHT®

High Performance Security Light

Item # **MBN3000**



**NetBright®** technology allows battery-powered spotlights to communicate with each other, so when just one spotlight on the network detects motion, all spotlights on the network will turn on simultaneously. Users are able to set up multiple networks with up to 50 lights on each to easily and effectively light any size home, yard or property.

## Key Features

- **Motion Activated:** The High Performance Security Light instantly turns on when it detects motion from up to 30 feet away.
- **Easy to Install:** No wires = quick and easy installation in less than 5 minutes; no electrician required.
- **Energy Efficient:** Our high quality LEDs never need to be replaced. It's so efficient, you will get up to one year of light on one set of batteries with regular use of 7-9 activations per day.
- **Durable, Weather Resistant:** Tight seals and UV resistant material allow the light to work in all weather conditions.
- **NetBright technology:** New NetBright technology allows networked lights to communicate with each other, so when one detects motion, it sends a signal to others on the network to turn on.

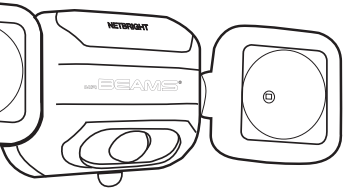
### NetBright® Technology Information

Light Output	500 Lumens (250 lumens per LED)
Light Coverage	Up to 800 sq ft per light
Provides	Up to 30 hours of light on one set of batteries
Multiple Lights	Connect up to 50 lights per network
Connectivity Range	150 ft
Networks	Create up to 4 separate networks

**MR BEAMS®**  
Surprisingly Bright Light Anywhere

www.mrbeams.com

600 Beta Drive, Unit 100, Mayfield Village, OH 44143



# Installation Instructions

## NetBright® High Performance Security Light

### MBN3000

#### What is included per light:

- 3 screws & 3 anchors
- Mounting bracket

#### What you need to install:

- 4 D-cell alkaline batteries
- 1 screwdriver (Phillips)
- 1 screwdriver (flathead)
- Drill (1/4" drill bit for drywall installation)

#### Spotlight Features:

**Motion/Light Sensor:** The light instantly turns on when it detects motion from up to 30 feet away. The light sensor conserves battery life by preventing the light from activating in daylight.

**Auto Shut-off:** Light shuts off automatically after 20 seconds if no motion is detected.

**Bright LED:** 500 lumens cover up to 800 sq ft.

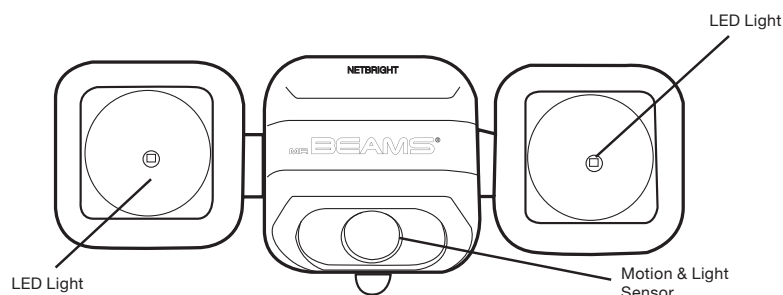
**Durable, Weather Resistant:** Tight seals and UV resistant material allow the light to work in all weather conditions.

**Multiple Lights:** Spotlights will activate simultaneously when any spotlight within the network detects motion.

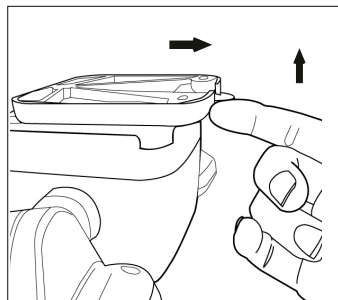
They will deactivate simultaneously if no motion is detected in the group.

#### Tips:

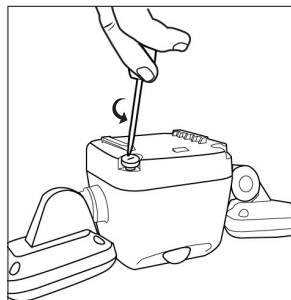
- Use only new alkaline D-Cell batteries with 1.5V rating.
- Do not mix old and new batteries. If batteries are not new, it may cause the light to malfunction.
- Install batteries with polarity in correct position.
- Light may activate when batteries are inserted. Simply take light into a dark room, allow batteries to settle, then test activation.
- **If your light will not turn off, it means that it is time to replace the batteries.**



**NOTE: Light sensor only allows light to activate in darkness. We recommend you test in a dark room or closet.**



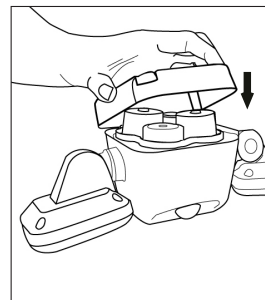
1. To remove the back plate from the light, use your finger to push up on the mounting bracket tab. This will unlock the bracket. Then slide the bracket down off the back of the light.



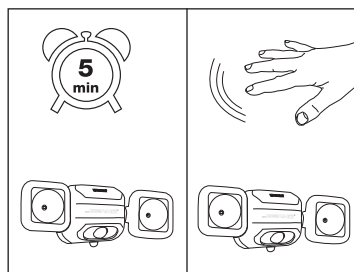
2. Use a screwdriver to loosen the four screws on the back plate. The screws will not come out all the way.



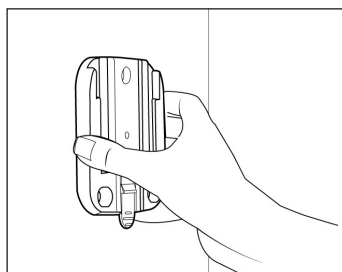
3. Lift the battery lid off the back of the light. Insert 4 D-Cell batteries with the flat ends against the springs.



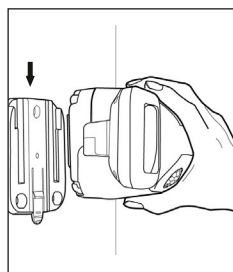
4. Replace the battery lid and make sure the screws are twisted in tightly.



5. Before mounting your light, test the motion sensor in a dark closet or bathroom. Close the light in the dark room and leave for up to 5 minutes. When you re-enter the room, the light should activate with motion.

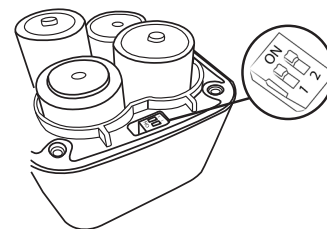


6. Determine mounting location for the light. Place the mounting plate on the surface so that the tab is pointing down and mark the pilot holes for drywall. Use a drill to insert the anchors, then line up the mounting plate with the holes and drill screws in.



7. Line up the light with the mounting plate and slide the light into the grooves.

#### Setting up lights to a network



After inserting the batteries, choose a channel for your spotlights with the dipswitches next to the battery compartment. Ensure all units are on the same channel by matching dipswitches.

**\* Lights set to the same channel that are within 150 ft range of each other will activate as one network. Light will work with all other NetBright® lights from Mr Beams®**

#### Battery Caution:

- 1) Do not mix old and new batteries
- 2) Do not mix alkaline, standard (carbon-zinc) or rechargeable (nickel cadmium) or (nickel metal hydride) batteries
- 3) Do not dispose of batteries in fire
- 4) Batteries should be recycled or disposed of as per state and local guidelines