



# Wireless Motion Sensor Slim Safety Light

Item # **MB970-WHT**



## Key Features

- **Motion/Light Sensor:** The Slim Safety Light instantly turns on when it detects motion from up to 15 feet away. The light sensor helps to prevent activation in daylight.
- **Easy to Install:** No wires = quick and easy installation in under 5 minutes; no electrician required.
- **Energy Efficient:** Our high quality LEDs never need to be replaced. It's so efficient, you will get up to 1 year of light on one set of batteries.
- **Bright LED:** The bright, powerful LED provides 100 lumens of bright white light. Designed with custom optics for the perfect intensity and focus.
- **Multipurpose:** Wireless lights are great for lighting up closets, pantries, stairways, sheds, porches and storage rooms.
- **Durable, Weather Resistant:** Tight seals and UV resistant material allow the light to work in all weather conditions.

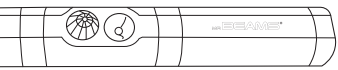


Light Output	Light Coverage	Batteries
<b>100</b> Lumens	<b>260</b> Sq ft	<b>C</b> 4x (not included)
Auto Shut Off		<b>20 Seconds</b>
Motion Sensing Range		<b>10-15 ft</b>
Warranty		<b>1 Year</b>

**MR BEAMS®**  
Surprisingly Bright Light Anywhere

[www.mrbeams.com](http://www.mrbeams.com)

600 Beta Drive, Unit 100, Mayfield Village, OH 44143



# Installation Instructions

## Wireless Motion Sensor LED Slim Safety Light

### MB970

#### What is included per light:

- Wireless LED Slim Safety Light
- 2 Screws & 2 Anchors
- Mounting Bracket

#### What you need to install:

- 4 C-cell Alkaline Batteries
- Screwdriver or Drill

#### Slim Safety Light Features:

**Motion/Light Sensor:** The light instantly turns on when it detects motion from up to 15 feet away. The light sensor conserves battery life by preventing activation in daylight.

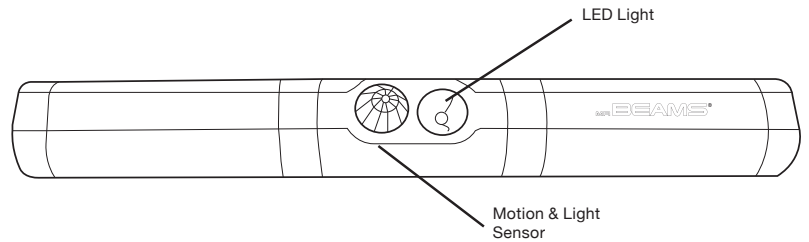
**Auto Shut-off:** Light shuts off automatically after 20 seconds if no motion is detected.

**Bright LED:** 100 lumens covers up to 260 sq ft.

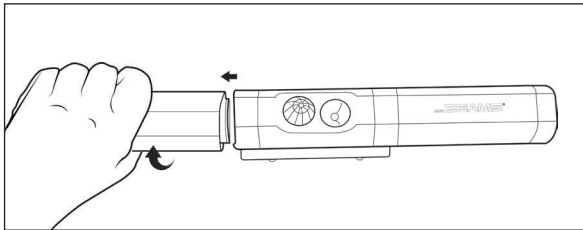
**Durable, Weather Resistant:** Tight seals and UV resistant material allow the light to work in all weather conditions.

#### Tips:

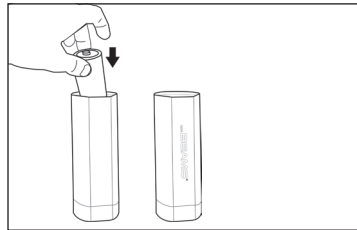
- Use only new alkaline C-Cell batteries with 1.5V rating.
- Do not mix old and new batteries. If batteries are not new, it may cause the light to malfunction.
- Install batteries with polarity in correct position.
- Light may activate when batteries are inserted. Simply take light into a dark room, allow batteries to settle, then test activation.
- **If your light will not turn off, it means that it is time to replace the batteries.**



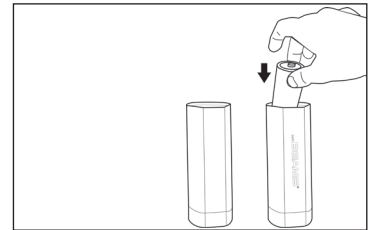
**NOTE: Light sensor only allows light to activate in darkness. We recommend you test in a dark room or closet before installation.**



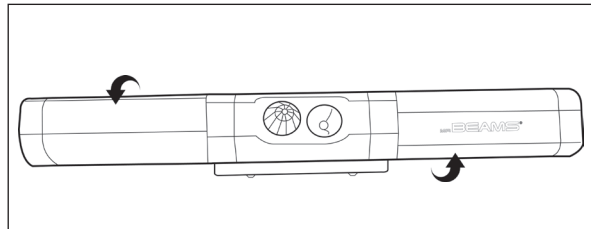
1. Remove the battery compartment by twisting the left side of the light counterclockwise and the right side counterclockwise.



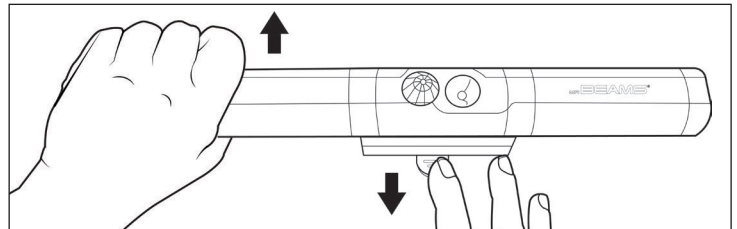
2. In the left compartment insert 2 C-cell batteries with the negative side down.



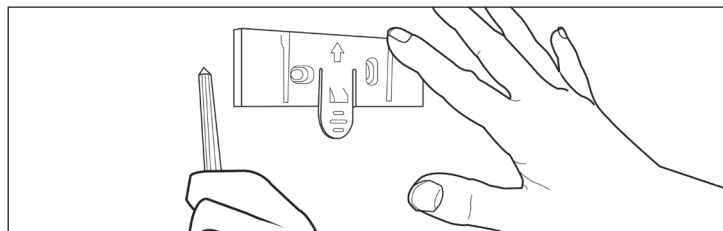
3. In the right compartment insert 2 C-cell batteries with the negative side down.



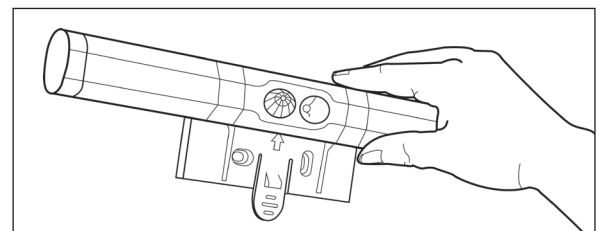
4. Twist the compartments back into place.



5. To remove the mounting plate from the light, use your finger to push up on the mounting bracket tab. This will unlock the bracket. Then slide the light off the bracket.



6. Determine mounting location for the light. Place the mounting plate on the surface so that the tab is pointing down, and mark the pilot holes. Use a drill to insert the anchors then line up the mounting plate with the pilot holes and drill screws in.



7. Line up the light with the mounting plate and slide the light into the grooves. Then rotate the light to desired angle.

#### Battery Caution:

- 1) Do not mix old and new batteries
- 2) Do not mix Alkaline, Standard (Carbon-Zinc) or Rechargeable (Nickel Cadmium) or (Nickel Metal Hydride) batteries
- 3) Do not dispose of batteries in fire
- 4) Batteries should be recycled or disposed of as per state and local guidelines